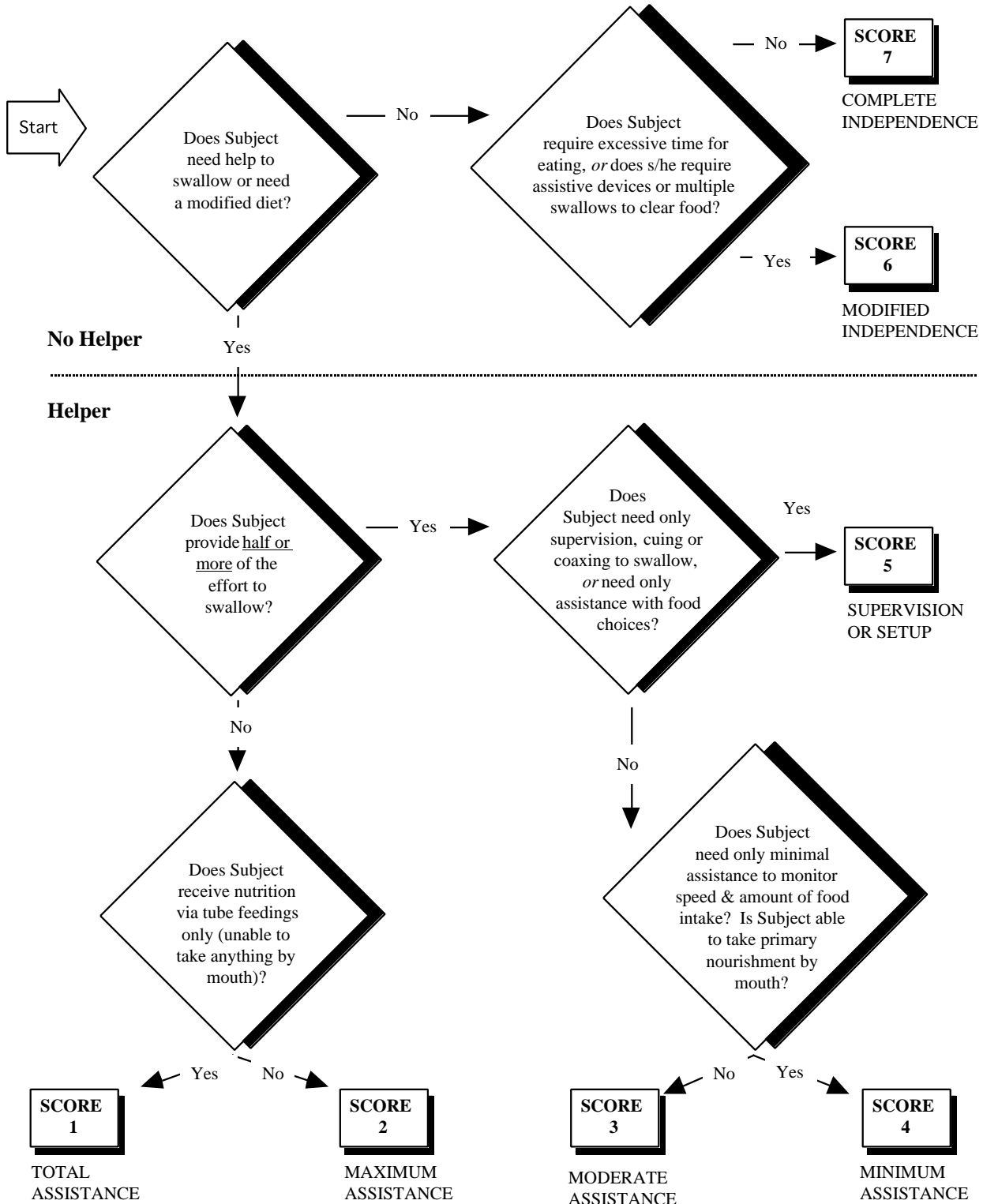


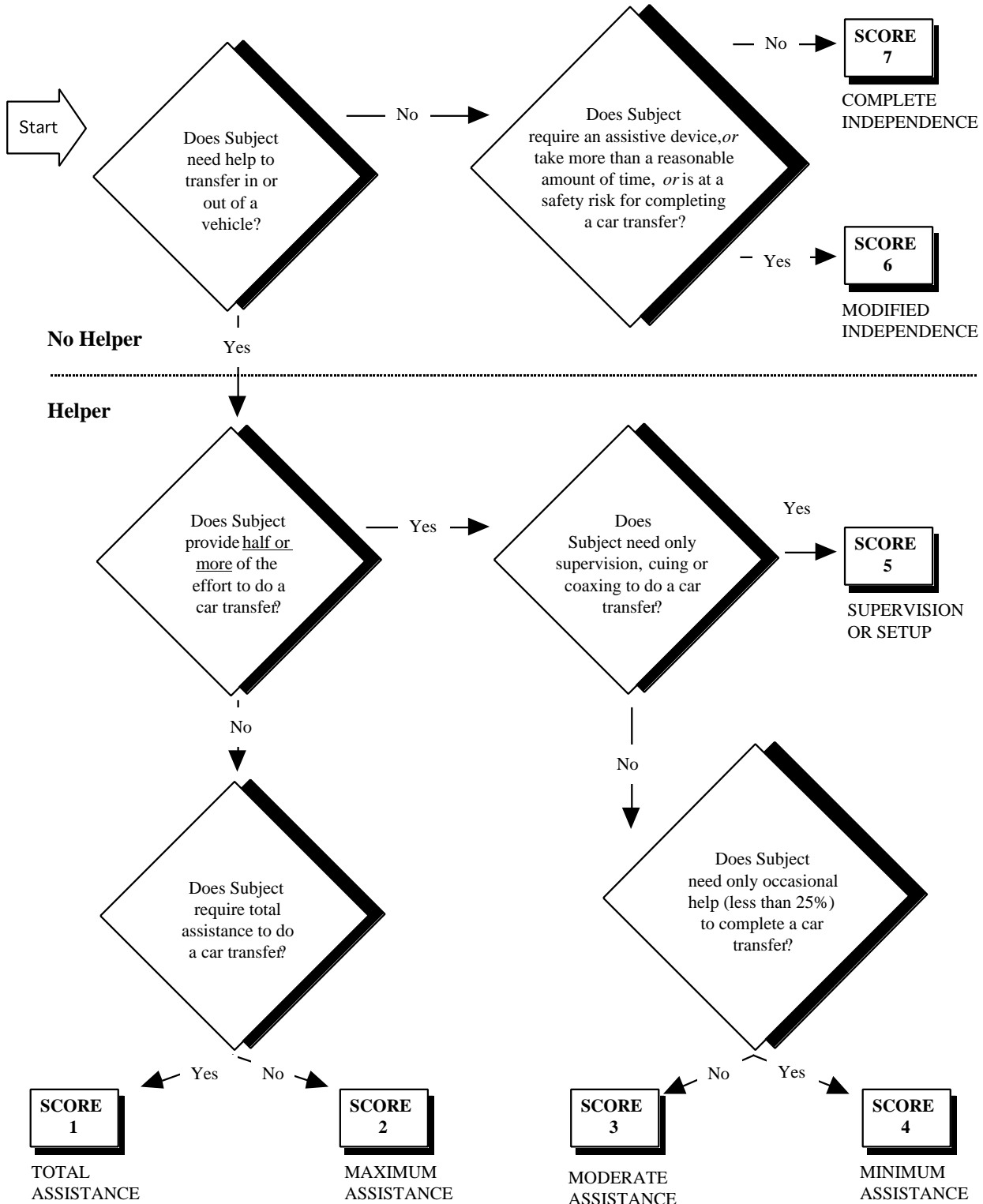
SWALLOWING

Swallowing includes the ability to safely eat a regular diet by mouth. At level 7 the subject is able to eat a regular diet of choice in a reasonable amount of time.



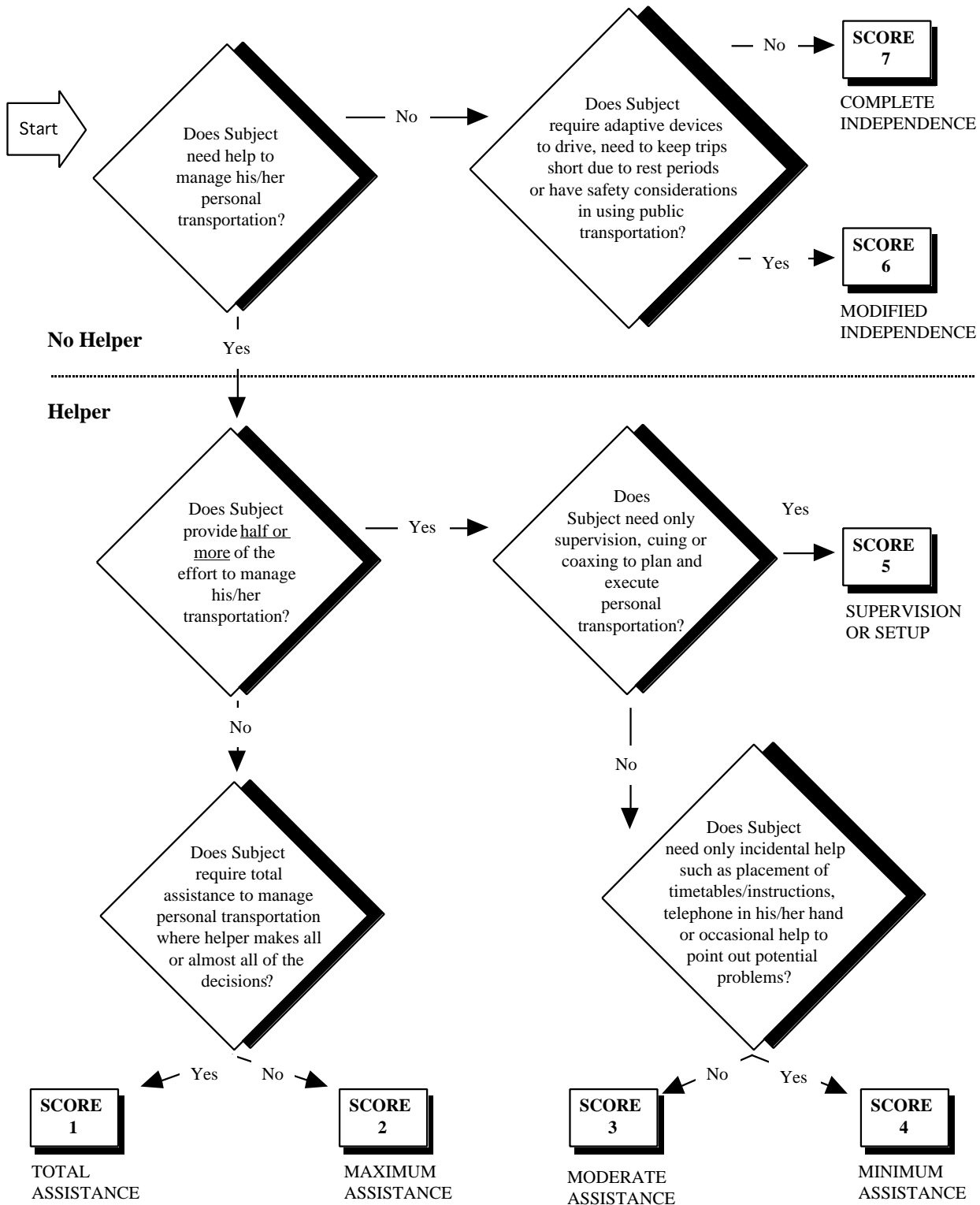
CAR TRANSFERS

The activity includes approaching the car, managing the car door and lock, getting on or off the car seat, and managing the seat belt. If a wheelchair is used for mobility, the activity includes loading and unloading the wheelchair. At level 7 the subject should be able to complete a car transfer without aids or assistive devices, in a reasonable amount of time.



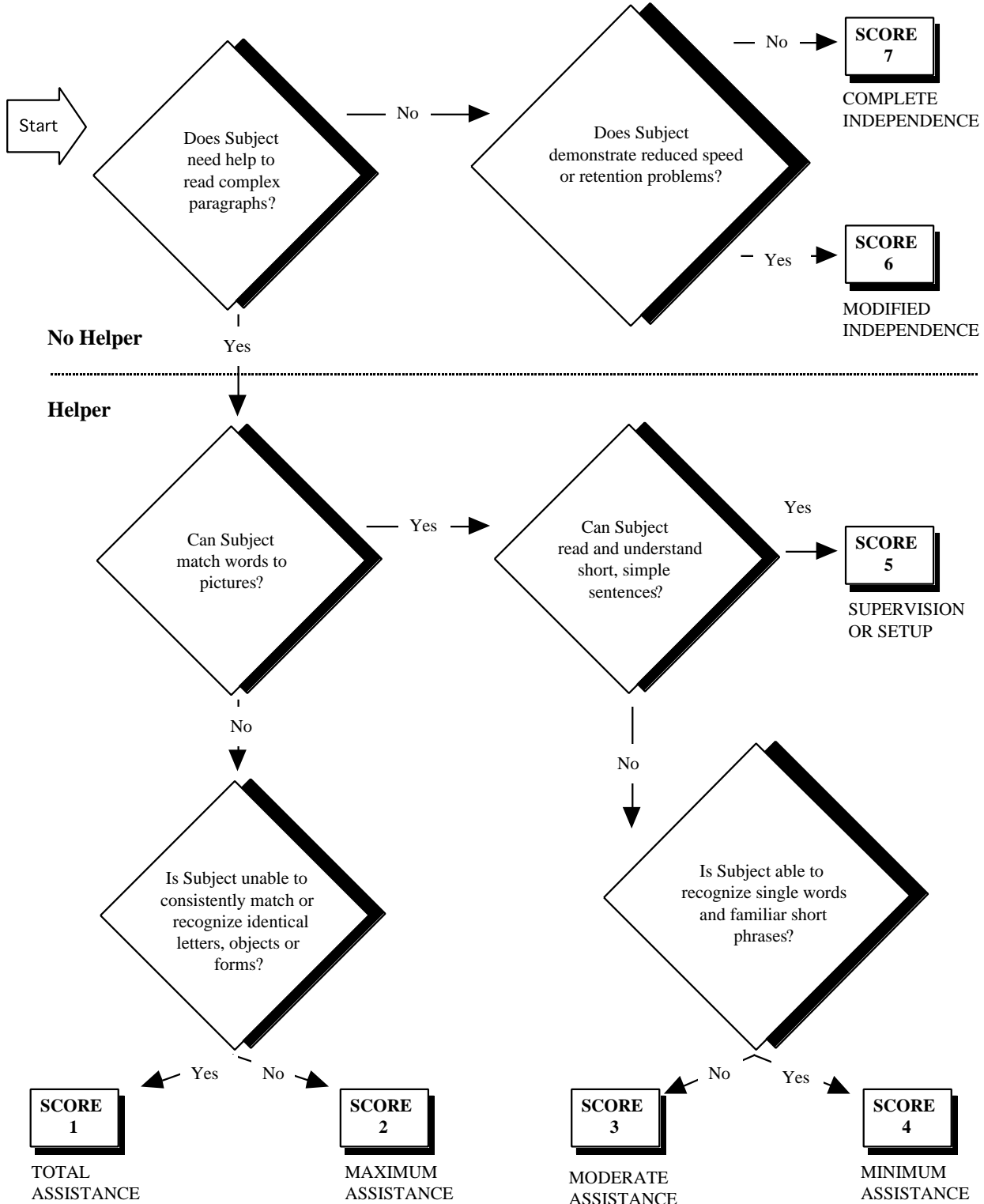
COMMUNITY ACCESS

Community Access includes the ability to manage transportation, including planning a route, time management, paying fares and anticipating access barriers (excluding car transfers). At level 7 the subject is able to independently use public transportation (bus, van or taxi) or is able to drive a car with no safety considerations.



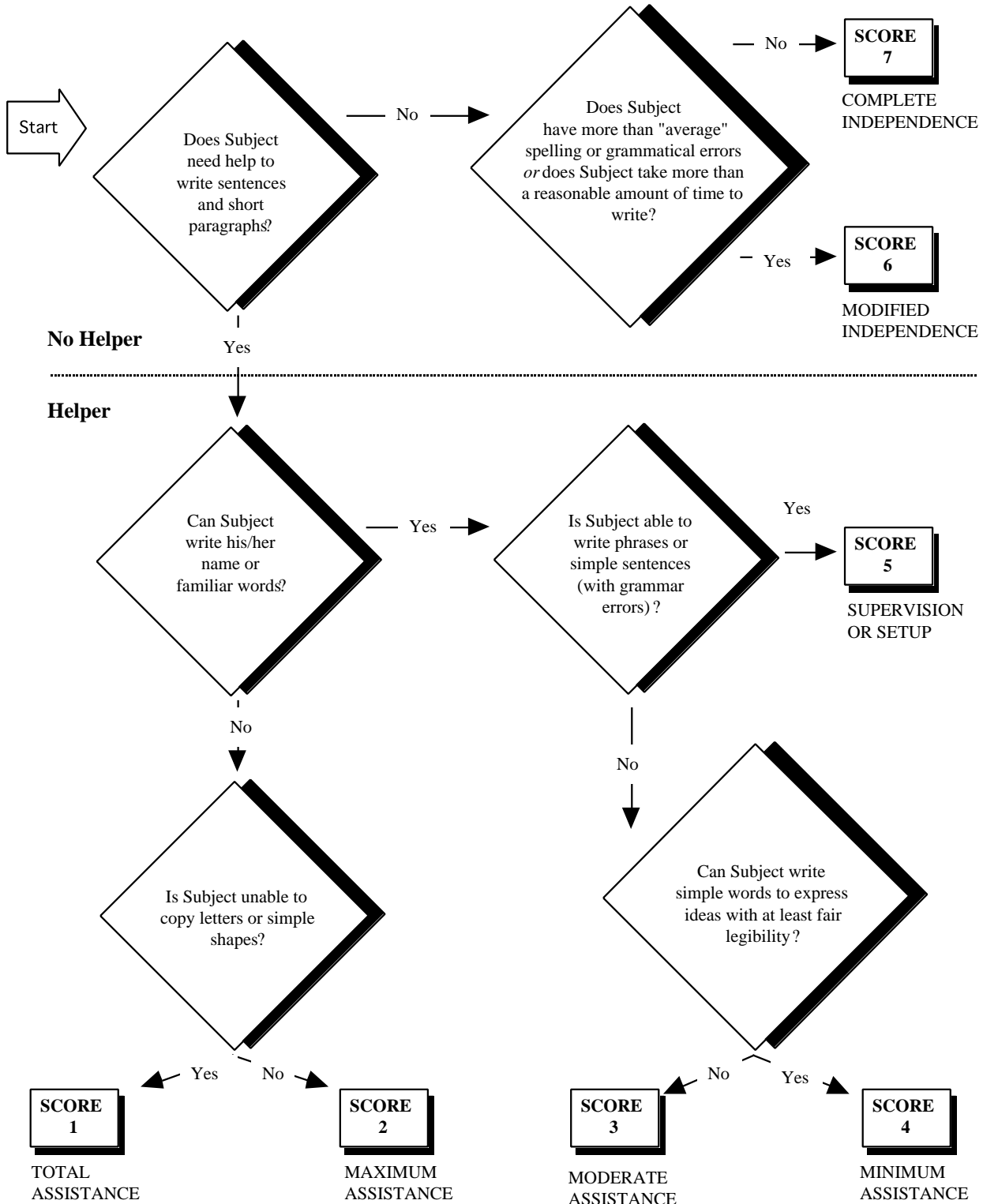
READING

Reading includes the ability to understand non-vocal written material. At level 7 the subject is able to read and completely understand and retain complex lengthy paragraphs (newspapers, books, etc) in a reasonable amount of time.



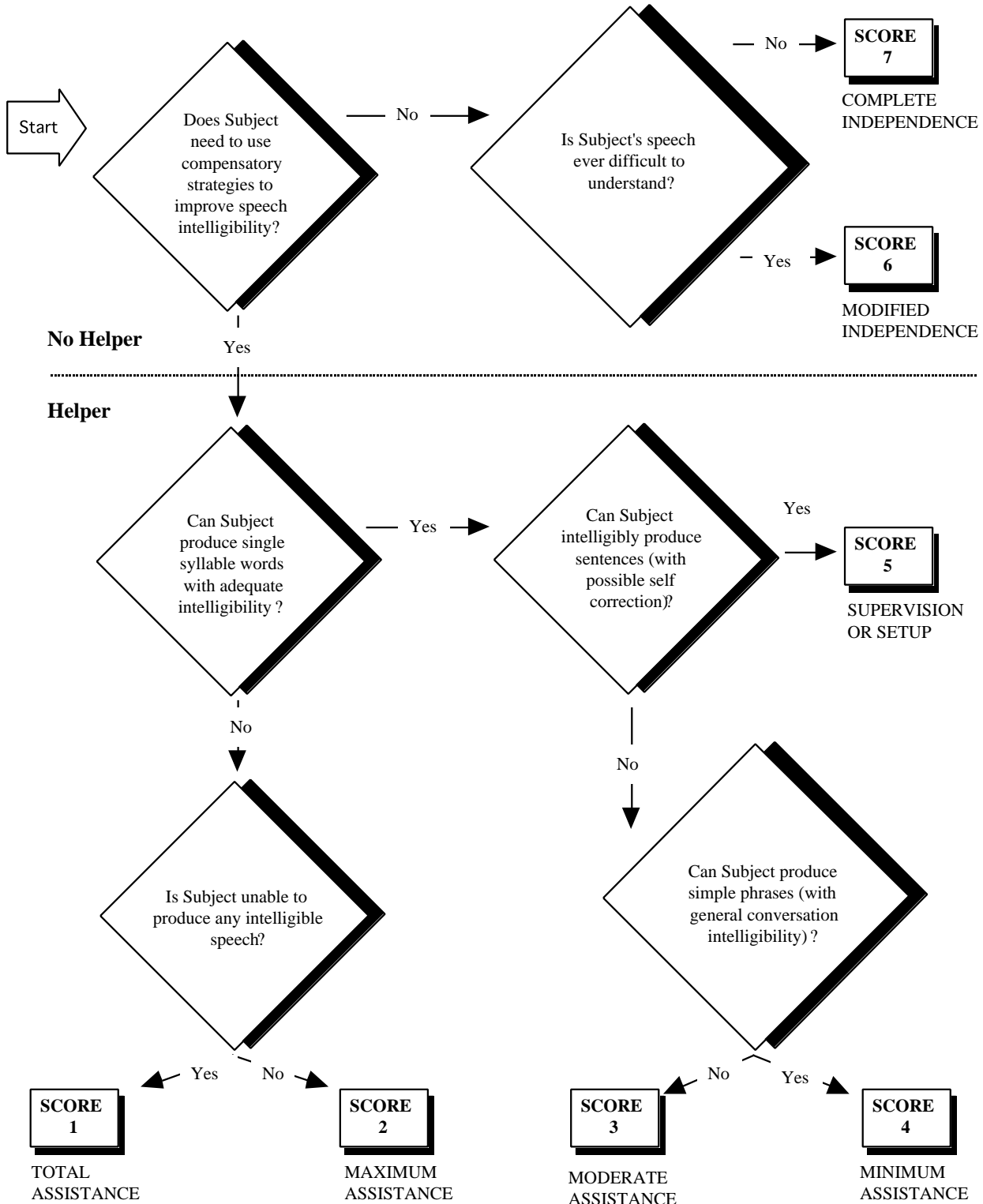
WRITING

Writing includes the spelling, grammar, and completeness of written communication. At level 7 the subject is able to write short paragraphs with "average" accuracy in spelling, grammar and completeness in a reasonable amount of time.



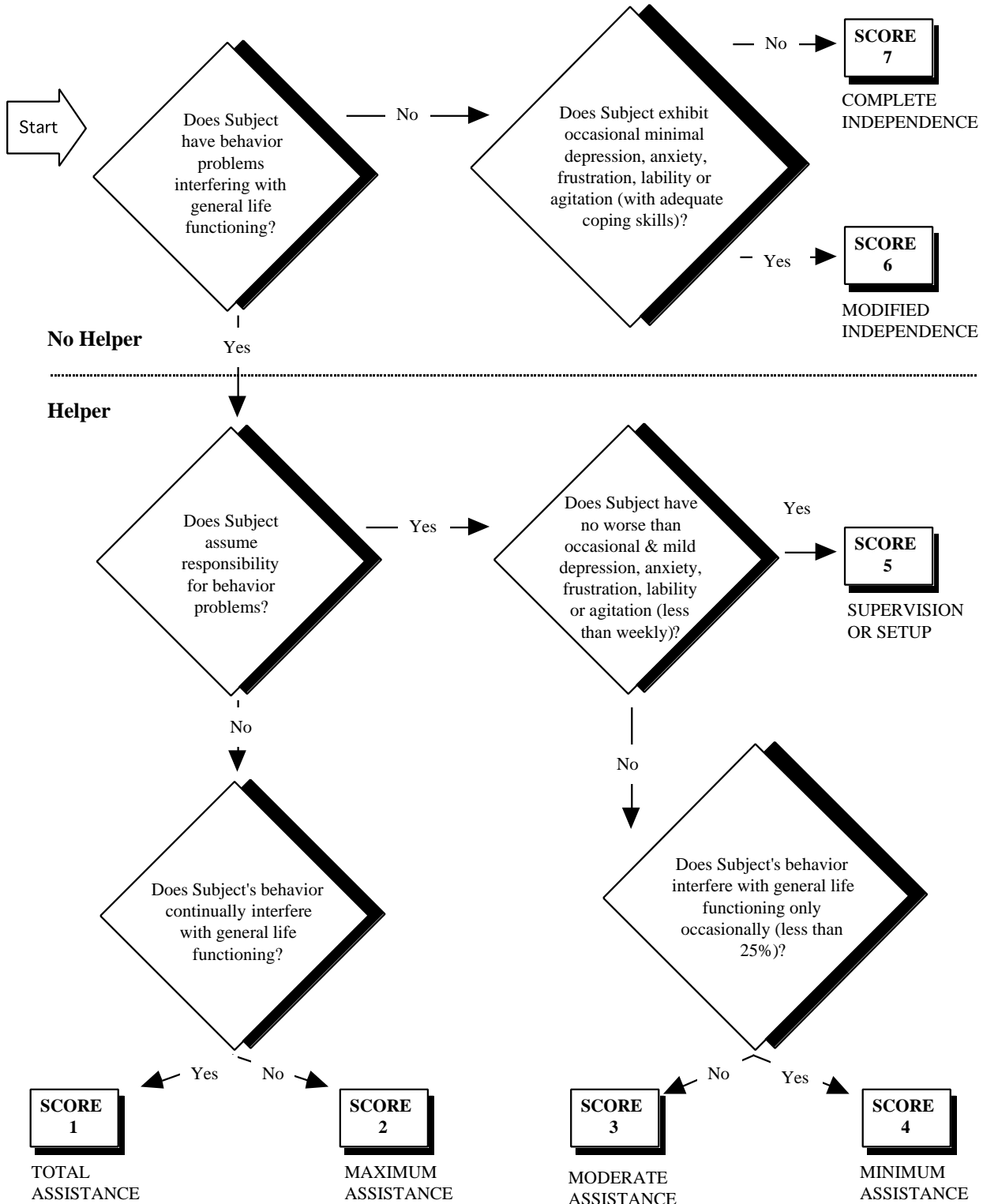
SPEECH INTELLIGIBILITY

Speech Intelligibility includes articulation, rate, volume, and quality of vocal communication. At level 7 the subject should be able to converse with a well modulated, well articulated voice



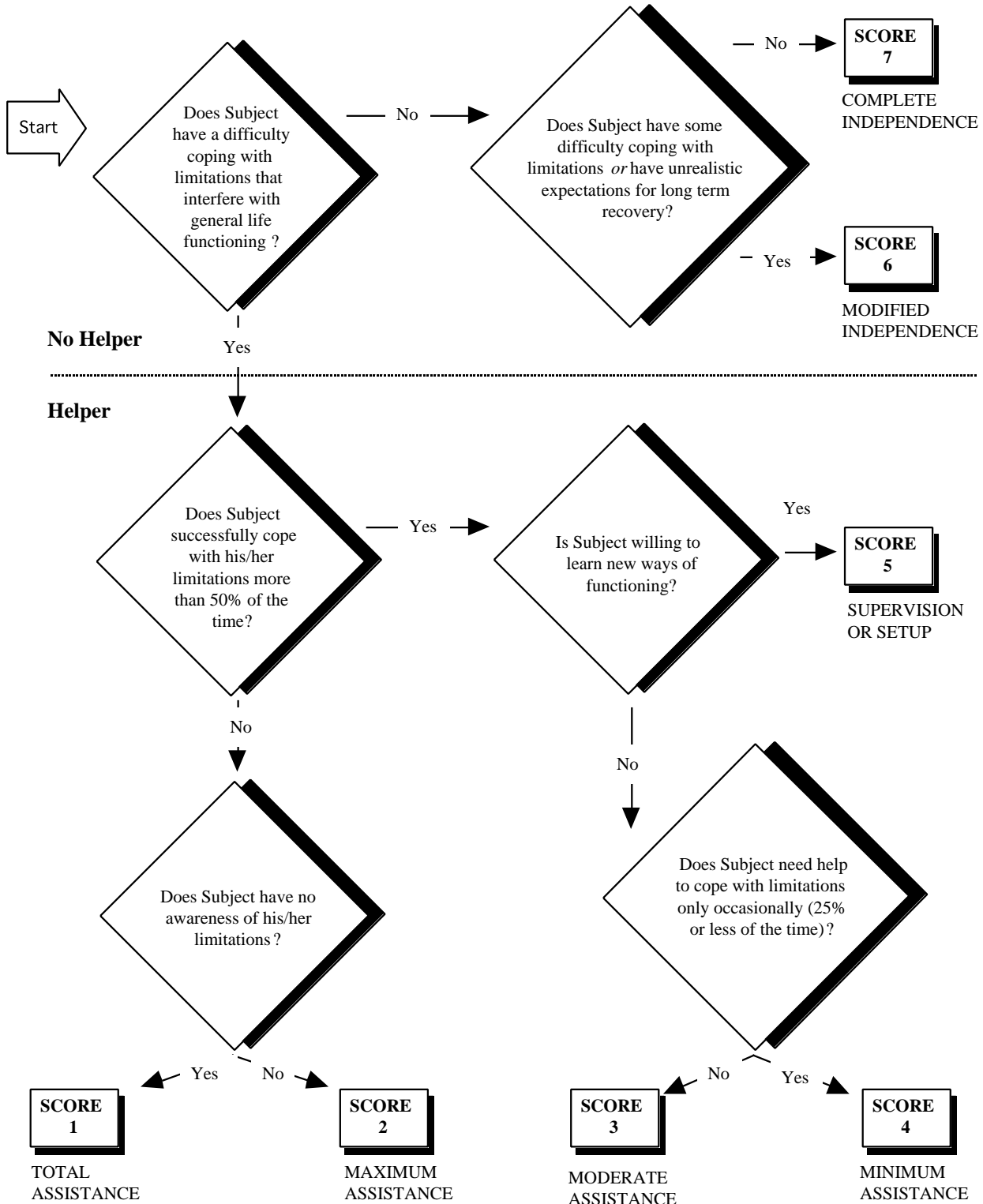
EMOTIONAL STATUS

Emotional Status includes the frequency & severity of depression, anxiety, frustration, unresponsiveness, agitation, interference with general life functioning, and ability to cope with and take responsibility for emotional behavior. At level 7 the subject rarely exhibits emotional problems, and is fully able to control & cope with these problems in a way in which they do not interfere with general life functioning.



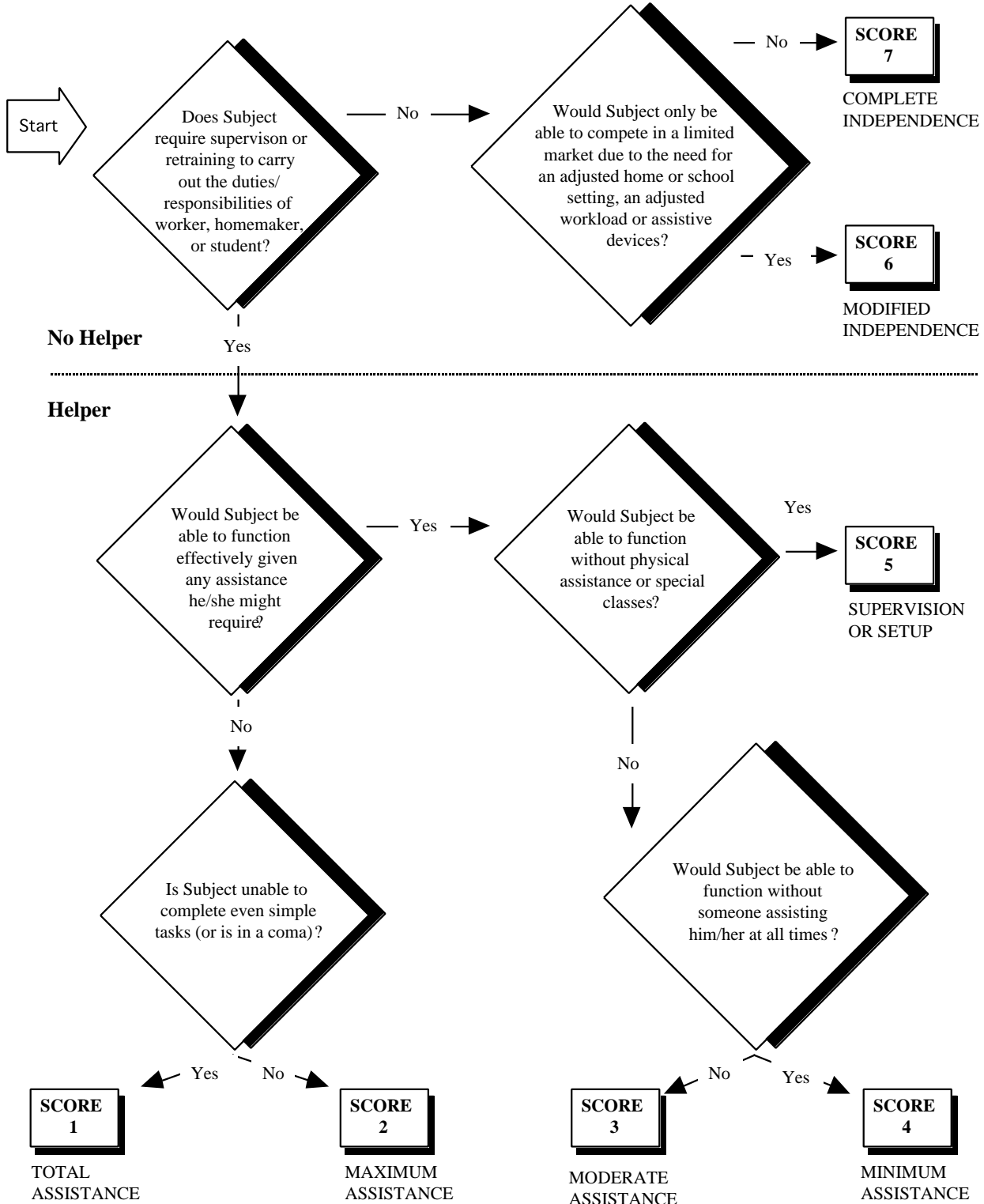
ADJUSTMENT TO LIMITATIONS

Adjustment to Limitations includes denial/awareness, acceptance of limitations, willingness to learn new ways of functioning, compensating, taking appropriate safety precautions and realistic expectations of recovery. At level 7 the subject should demonstrate the ability to compensate for limitations, exercise safe judgement in ADLs, and have realistic expectations for long term recovery.



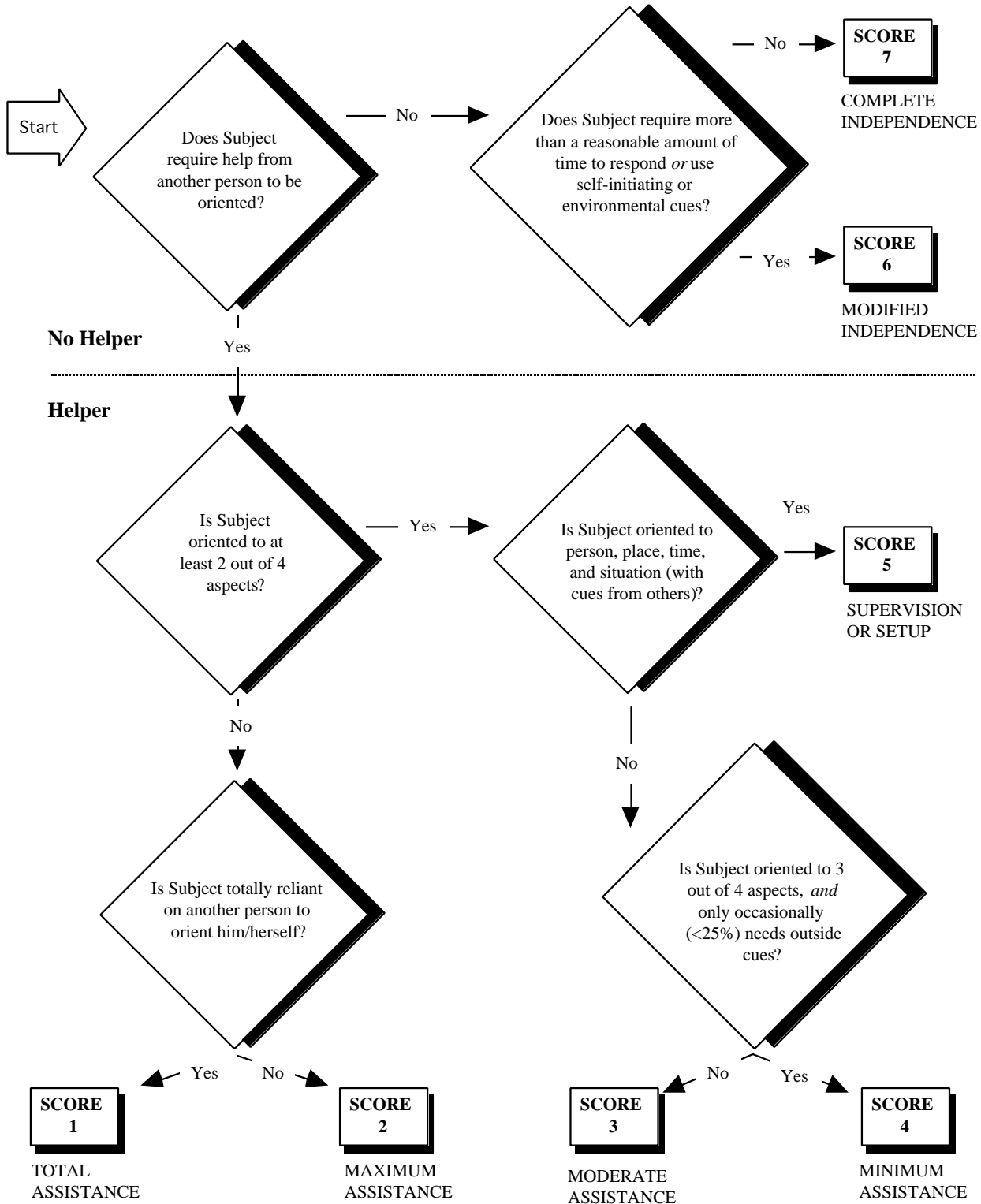
EMPLOYABILITY

Employment includes involvement in one or more of the following categories: in the workforce, as a student, as a homemaker. At level 7 a subject can compete in the open market for a wide range of jobs, plan, execute and assume responsibility for homemaking or understand and carry out school assignments and maintain a passing average.



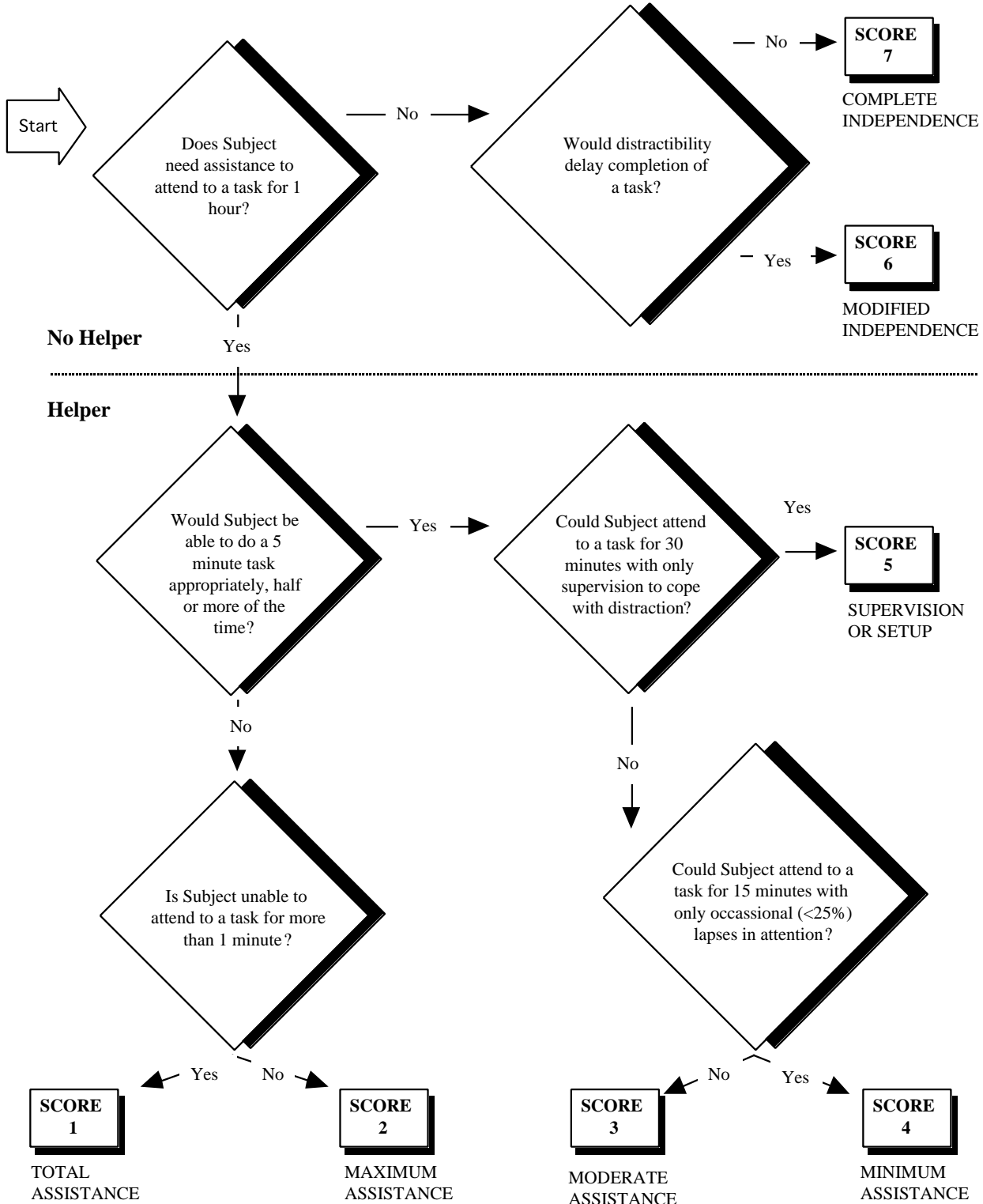
ORIENTATION

Includes consistent orientation to person, place, time and situation. At level 7 a subject should be completely oriented to person, place, time and situation - without cues.



ATTENTION

Attention includes the length of time the subject is able to concentrate on tasks, taking into consideration distractibility, level of responsiveness, and the difficulty of the task. At level 7 a subject should be able to attend to a task for 60 minutes without assistance in maintaining the task, taking into consideration distractions and self directed return to tasks.



SAFETY JUDGEMENT

Safety Judgement includes orientation to situation, awareness of deficits and their implications, ability to plan ahead, ability to understand the nature of situations involving potential danger and to identify risks involved, freedom from impulsivity, ability to remember safety related information, and ability to respond appropriately if danger arises. At level 7 a subject should be able to pursue all activities independently using proper safety awareness skills.

